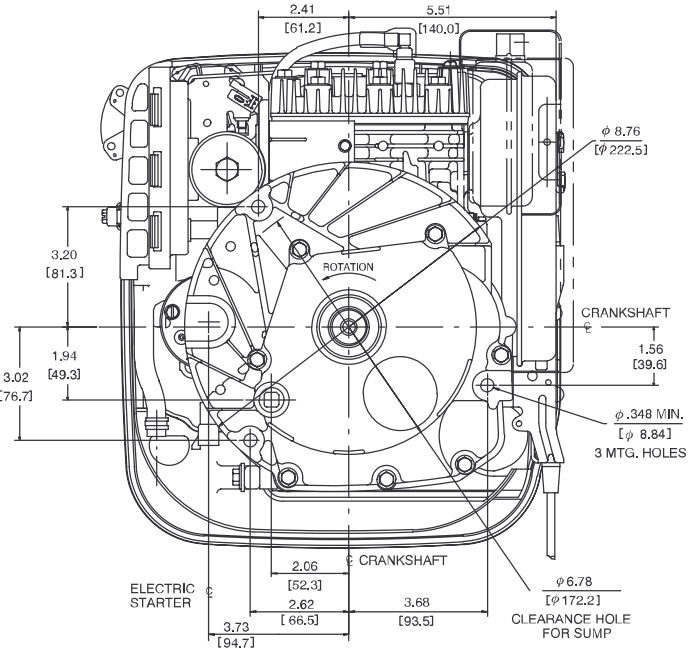
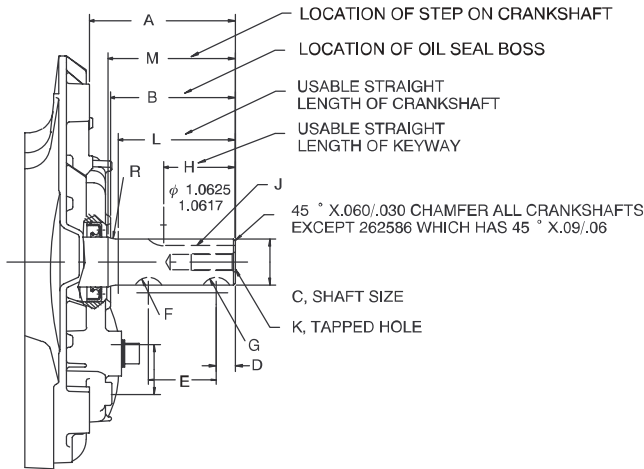
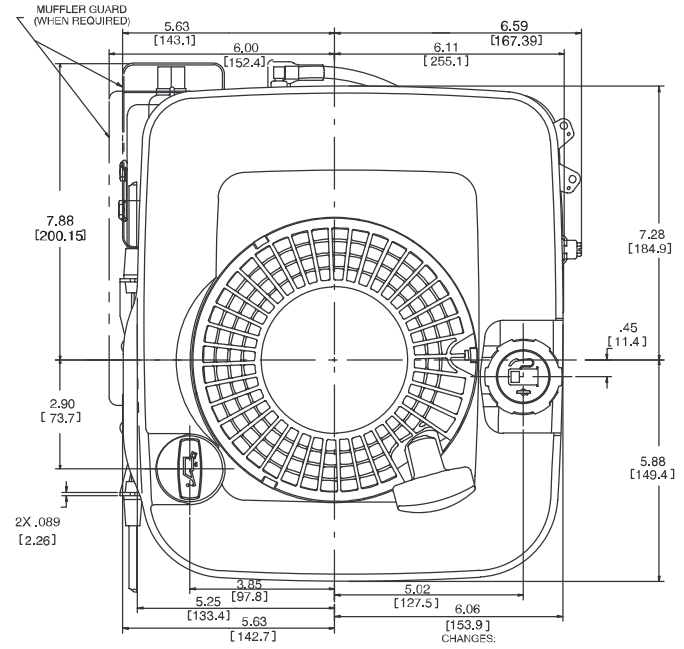
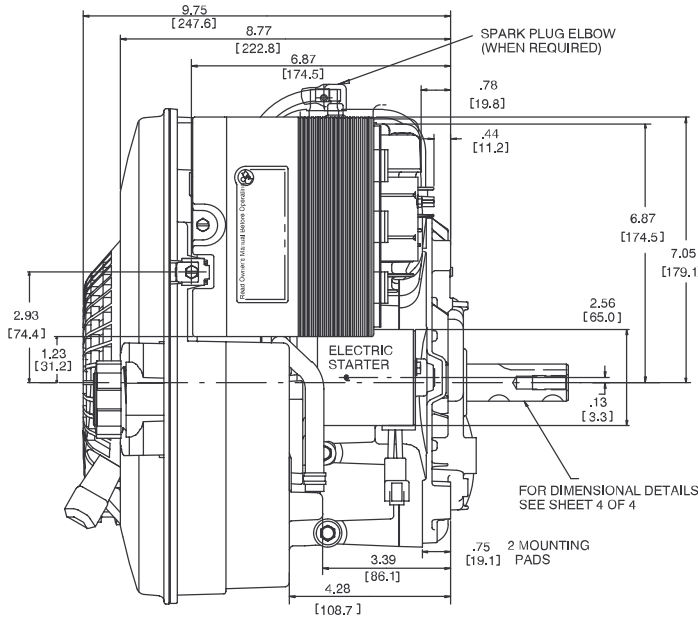


12F700 QUANTUM® Series

5 HP

Bore: 2.69 in. (68 mm) Stroke: 2.04 in. (51.8 mm) Displacement: 11.57 cu. in. (190 cc) Dry Weight: 24 lbs. (10.9 kg)

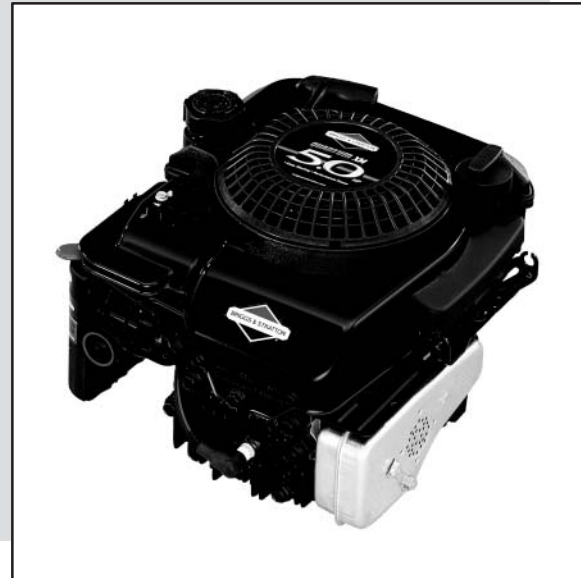
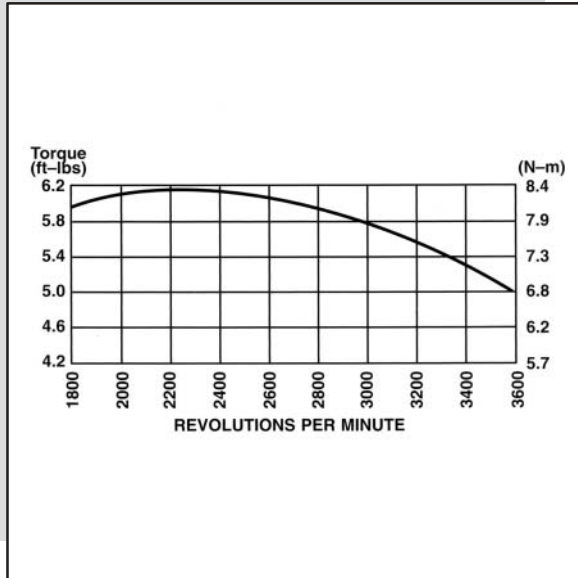


BRIGGS & STRATTON EXTENSION NO.	PRODUCTION ASSEMBLY NUMBER	A ± .048	B ± .058	C	D ± .020	E ± .020	F WOODRUFF KEY NO. (NOM. SIZE)	G WOODRUFF KEY NO. (NOM. SIZE)	H ± .020	J SQUARE KEY SIZE (W X H)	K	L	M ± .045	R
	493428	3.541	3.112	φ .874 .873	2.460	-	-	505 (5/32 X 5/8)	-	-	-	SEE DETAIL DWG.	3.141	SEE DETAIL DWG.
	QS1M	493433	3.156	2.727	-	-	-	-	-	-	.438-20 UNF-2B .94 DEEP MIN.	2.341	SEE DETAIL DWG.	SEE DETAIL DWG.
	Q16M	493430	3.156	2.727	φ .9843 .9833 (φ 25MM)	.410	1.840	605 (3/16 X 5/8)	605 (3/16 X 5/8)	1.520	1/4 X 1/4	.375-24 UNF-2B .94 DEEP MIN.	2.635	2.833 .320 .280
	Q16I	493435	3.156	2.727	φ .874 .873	-	1.840	505 (5/32 X 5/8)	505 (5/32 X 5/8)	1.520	3/16 X 3/16	.375-24 UNF-2B .94 DEEP MIN.	2.564	2.833 .320 .280
		494547	2.438	2.009	φ .9843 .9833 (φ 25MM)	-	-	-	1.260	3/16 X 3/16	.438-20 UNF-2B 106 DEEP MIN.	1.917	2.115	.320 .280
	Q25I	493436	2.438		φ .874 .873	.410	-	-	505 (5/32 X 5/8)	1.250	3/16 X 3/16	.375-24 UNF-2B .94 DEEP MIN.	1.847	2.115 .320 .280
(SERVICE ONLY)	493438	1.188		φ .874 .873	.410	-	-	-	505 (5/32 X 5/8)	-	-	.375-24 UNF-2B .94 DEEP MIN.	.770	.865 .175 .145
	Q41	498571	1.812	.874	.873	0.410	-	-	505 (5/32 X 5/8)	1.020	3/16 X 3/16	.375-24 UNF-2B .94 DEEP MIN.	1.221	1.489 .320 .280

Standard V/S Engines

5 HP

12F800 QUANTUM® Series



MODEL	5.0 HP 190 CC 12F702-1712-D1	5.0 HP 190 CC 12F702-1868-D1	5.0 HP 190 CC 12F802-1733-D1	5.0 HP 190 CC 12F802-2001-D1
CYLINDER	ALUMINUM	ALUMINUM	ALUMINUM	ALUMINUM
FLYWHEEL	HEAVY	HEAVY W/GUARD	HEAVY	HEAVY
STARTER	5:00 REWIND	3:00 REWIND	5:00 REWIND	6:00 REWIND
SPECIAL FEATURES	XE COVER	XE COVER	XM COVER	XM COVER
PTO MOUNTING	STANDARD	STANDARD	STANDARD	STANDARD
CRANKSHAFT	498565-7/8" DIA 3/16" KWY 3/8-24 D&T	498571-7/8" DIA 3/16" KWY 3/8-24 D&T	498566-7/8" DIA 3/16" KWY 3/8-24 D&T	498571-7/8" DIA 3/16" KWY 3/8-24 D&T
AUXILLARY DRIVE	NONE	NONE	NONE	NONE
BEARINGS	DU MAG PLAIN PTO	DU MAG PLAIN PTO	DU MAG PLAIN PTO	DU MAG PLAIN PTO
OIL FILL	OPP. CARB. SIDE	OPP. CARB. SIDE	OPP. CARB. SIDE	OPP. CARB. SIDE
DIPSTICK	EXTENDED	EXTENDED	EXTENDED	EXTENDED
OIL DRAIN	CARB. SIDE	CARB. SIDE	CARB. SIDE	CARB. SIDE
FUEL SYSTEM	1.50 QUARTS (1.42 LITERS) MOLDED TANK	1.50 QUARTS (1.42 LITERS) MOLDED TANK	1.60 QUARTS (1.5 LITERS) MOLDED TANK	1.60 QUARTS (1.5 LITERS) MOLDED TANK
GOVERNOR	MECHANICAL	MECHANICAL	MECHANICAL	MECHANICAL
CONTROLS	MANUAL FRICTION @ CARBURETOR	MANUAL FRICTION @ CARBURETOR	EQUIP FOR REMOTE	MANUAL FRICTION @ CARBURETOR
CHOKE	PRIMER CARB.	PRIMER CARB.	PRIMER CARB.	5 POSITION MANUAL CHOKE
NO-LOAD TEST SPEED	3600 ± 100 RPM	3600 ± 100 RPM	3600 ± 100 RPM	3300 ± 100 RPM
CASING CLAMP & SCREW	LOOSE	WITHOUT	AT CYL. HEAD	LOOSE
STOPS	REMOTE STOP SWITCH	REMOTE STOP SWITCH	REMOTE STOP SWITCH	REMOTE STOP SWITCH
AIR CLEANER	PAPER ELEMENT	PAPER ELEMENT	DUAL ELEMENT	PAPER ELEMENT
MUFFLER	TUNED INSTALLED UNPAINTED	TUNED INSTALLED UNPAINTED ALUMINIZED TUNED GUARD INSTALLED	TUNED INSTALLED UNPAINTED	TUNED INSTALLED UNPAINTED
DEFLECTOR	WITHOUT	WITHOUT	SIDE OUT INSTALLED 3:00 POSITION	SIDE OUT INSTALLED 9:00 POSITION
PAINT	290 SATIN BLACK	290 SATIN BLACK	290 SATIN BLACK	290 SATIN BLACK
MINIMUM ORDER QTY	36	36	36	36
PACKAGING	001/036/080	001/036/080	001/036/080	001/036/080

* Indicates that engine specification is included in the *Engine Sales Replacement Specifications*, MS-5568.

Standard V/S
Engines